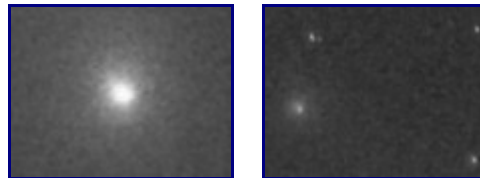
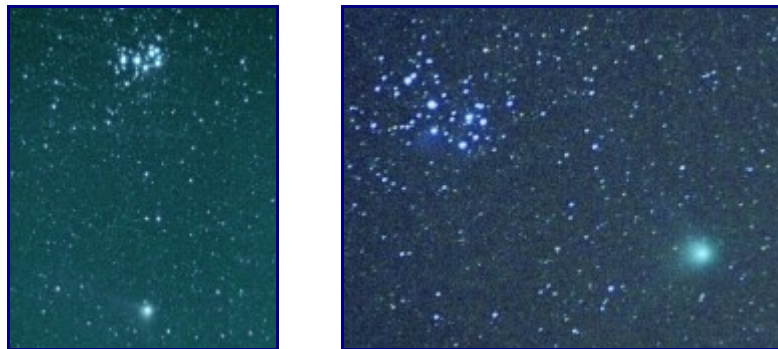


Comet Machholz was visible in the sky in 2005. It was discovered by Don Machholz in August. The comet was seen as a diffuse patch with a star like nucleus and, in December, no discernable tail. It was at about magnitude 5, faintly visible to the naked eye.



During early January 2005, Comet Machholz climbed steadily through the southern sky up into the constellation of Taurus and on the evening of Jan 8th it was to be seen in the same low power field as the Pleiades star cluster.



Observing from the darker skies of Weston Colville in Cambs., Terry Pearce managed to obtain some beautiful images of the comet when it was close to the Pleiades.

Terry used a Canon SLR 35mm film camera mounted piggyback on a small equatorial telescope for the 5 minute guided exposures. The images were captured on 400 ASA Fujichrome colour print film. The negatives were scanned and then processed in a computer using Adobe Photoshop.

Doug Daniels